

**Robust construction
for most intensive applications**

**Versatile application:
for lorry doubledeck stacking
or used as pallet truck/stacker
in the warehouse**

**ProTracLink for optimum
travel characteristics**

**Available with foldable
or fixed stand-on platform**



ERD 220

Electric pallet truck/stacker (2000 kg)

The Jungheinrich electric pallet truck ERD 220 is a universal truck. As a double-deck stacker, the ERD picks up two Euro pallets, one upon the other, via mast and support arm lift: ideal for loading and off-loading lorries with two loading levels. The ERD can also be used as pallet truck or stacker in the warehouse.

The ERD is optimally suited for pedestrian as well as stand-on operation. The simple folding down or up of the platform and

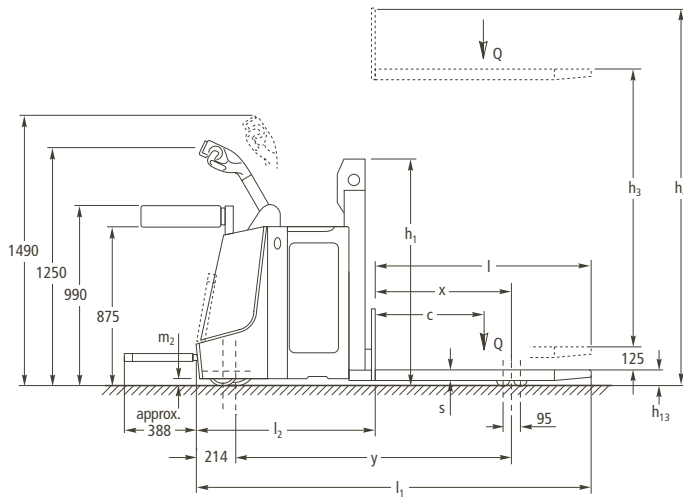
side guards is sufficient for the ERD to adapt to any application. Through its higher speed in stand-on operation – compared with purely pedestrian trucks – throughput and transportation of goods is particularly economical.

The stand-on platform provides excellent comfort and safety: the cushioning noticeably absorbs any bumps when travelling over uneven floors or passing over thresholds. For safety reasons, the platform does

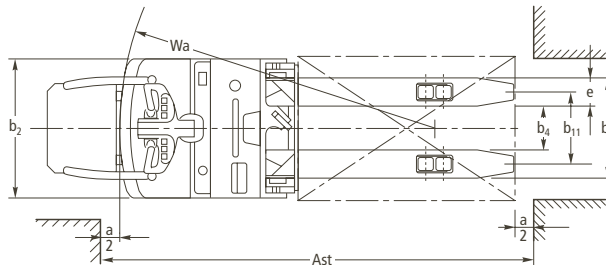
not fold up automatically on stepping off. A simple touch with the foot is sufficient for it to glide back into the truck contours. The rounded contours of platform and side supports reduce the danger of “getting caught” on obstacles such as racking or lorry struts.

The ERD is fed its required energy for an intensive application from batteries up to 375 Ah.

ERD 220



| Mast table ERD 220 | | |
|--------------------|-----------------------------------|----------------------------|
| Mast | Closed mast height h_1 mm | Lift height h_3 mm |
| ZT | 1250 | 1660 |
| | 1430 | 2010 |
| | 1710 | 2560 |
| DT | 1260 | 2500 |



Technical Data in line with VDI 2198 as at: 08/2007

| | | | | | | |
|----------------------------------|------------------|---|-------------------------------------|---------------------|--------------------|------|
| Identification | 1.1 | Manufacturer (abbreviation) | Jungheinrich | Jungheinrich | 1.1 | |
| | 1.2 | Manufacturer's type designation | ERD 220 (K) | ERD 220 (L) | 1.2 | |
| | 1.3 | Drive (electric – battery or mains, diesel, petrol, fuel gas, manual) | electric | electric | 1.3 | |
| | 1.4 | Type of operation (hand, pedestrian, standing, seated, order picker) | pedestrian | pedestrian | 1.4 | |
| | 1.5 | Load capacity / rated load | Q (t) | 2.0 | 2.0 | 1.5 |
| | | Load capacity at mast lift | Q (t) | 1.0 | 1.0 | |
| | | Load capacity at support arm lift | Q (t) | 1.0 | 1.0 | |
| | 1.6 | Load centre distance | c (mm) | 600 | 600 | 1.6 |
| | 1.8 | Load distance, centre of drive axle to fork | x (mm) | 925 ¹⁾ | 925 ¹⁾ | 1.8 |
| 1.9 | Wheelbase | y (mm) | 1578 ¹⁾ | 1650 ¹⁾ | 1.9 | |
| Weights | 2.1 | Service weight incl. battery (see line 6.5) | kg | 1096 | 1172 | 2.1 |
| | 2.2 | Axle loading, laden front/rear | kg | 2028/1068 | 2064/1108 | 2.2 |
| | 2.3 | Axle loading, unladen front/rear | kg | 278/818 | 314/858 | 2.3 |
| Wheels, Chassis | 3.1 | Tyres (solid rubber, superelastic, pneumatic, polyurethane) | Vulkollan® | Vulkollan® | 3.1 | |
| | 3.2 | Tyre size, front | 230x77 | 230x77 | 3.2 | |
| | 3.3 | Tyre size, rear | 85x75 | 85x75 | 3.3 | |
| | 3.4 | Additional wheels (dimensions) | 140x54 | 140x54 | 3.4 | |
| | 3.5 | Wheels, number front/rear (x = driven wheels) | 3-1x/4 | 3-1x/4 | 3.5 | |
| | 3.7 | Track width, rear | b ₁₁ (mm) | 380 | 380 | 3.7 |
| | Basic Dimensions | 4.2 | Lowered mast height | h ₁ (mm) | 1250 | 1250 |
| 4.4 | | Lift height | h ₃ (mm) | 1660 | 1660 | 4.4 |
| 4.5 | | Extended mast height | h ₄ (mm) | 2250 | 2250 | 4.5 |
| 4.6 | | Initial lift | h ₅ (mm) | 125 | 125 | 4.6 |
| 4.9 | | Height of tiller in drive position min./max. | h ₁₄ (mm) | 1250/1490 | 1250/1490 | 4.9 |
| 4.15 | | Lowered height | h ₁₃ (mm) | 90 | 90 | 4.15 |
| 4.19 | | Overall length (unladen) | l ₁ (mm) | 2093 | 2165 | 4.19 |
| 4.20 | | Length to face of forks | l ₂ (mm) | 907 | 979 | 4.20 |
| 4.21 | | Overall width | b ₁ /b ₂ (mm) | 770 | 770 | 4.21 |
| 4.22 | | Fork dimensions | s/e/l (mm) | 65x190x1190 | 65x190x1190 | 4.22 |
| 4.25 | | Width over forks | b ₅ (mm) | 570 | 570 | 4.25 |
| 4.32 | | Ground clearance, centre of wheelbase | m ₂ (mm) | 30 | 30 | 4.32 |
| 4.34 | | Aisle width for pallets 800 x 1200 lengthways | Ast (mm) | 2450 ¹⁾ | 2600 ¹⁾ | 4.34 |
| 4.35 | Turning radius | Wa (mm) | 1780 ¹⁾ | 1930 ¹⁾ | 4.35 | |
| Performance Data | 5.1 | Travel speed, laden/unladen | km/h | 7.2/8.2 | 7.2/8.2 | 5.1 |
| | 5.2 | Lift speed, laden/unladen | m/s | 0.13/0.22 | 0.13/0.22 | 5.2 |
| | 5.3 | Lowering speed, laden/unladen | m/s | 0.21/0.15 | 0.21/0.15 | 5.3 |
| | 5.7 | Gradient performance, laden/unladen | % | 8/15 | 8/15 | 5.7 |
| | 5.8 | Max. gradient performance, laden/unladen | % | 8/15 | 8/15 | 5.8 |
| | 5.10 | Service brake | | electro mechanic | electro mechanic | 5.10 |
| E-Motor | 6.1 | Drive motor rating S ₂ 60 min. | kW | 2.0 | 2.0 | 6.1 |
| | 6.2 | Lift motor rating at S ₃ 15 % | kW | 2.2 | 2.2 | 6.2 |
| | 6.4 | Battery voltage, nominal capacity K _s | V/Ah | 24/230 | 24/345 (375) | 6.4 |
| | 6.5 | Battery weight | kg | 220 | 288 | 6.5 |
| | 8.1 | Type of drive control | | impulse control | impulse control | 8.1 |
| 1) load section lowered: + 70 mm | | | | | | |

This specification sheet according to VDI regulation 2198 only provides technical values for the standard truck. Non-standard tyres, different masts, additional equipment, etc. could produce other values. Right reserved for technical changes and improvements.

Make use of the advantages

Powerful drive motor and "intelligent" controls

Advanced drive technology and control electronics (SpeedControl) ensure safe travel characteristics with adjustment opportunities to every application:

- The travel speed prescribed on the travel switch is maintained in every travel situation – even on ascending/descending gradients.
- The brake on the ERD 220 is automatically applied if unintentional rolling on ramps occurs.
- Individually adjustable travel parameters facilitate optimum adjustment to every requirement.
- Energy reclamation through regenerative braking on taking back the travel speed.
- 2-year warranty on drive motor.

Flexible application opportunities

Various platform types (foldable/fixed) provide different utilisation opportunities: Type 1: foldable stand-on platform with side supports.

- With a choice of pedestrian or stand-on operation.
- Reduced travel speed (4.4 km/h) in pedestrian operation.
- Reduced travel speed (5.0 km/h) with load raised (> 300 kg) in the mast lift.

Type 2: Fixed stand-on platform with enclosed operator platform (optional).

- Exclusively for applications without pedestrian operation.
- Protection for operator on both sides.

Robust construction for the most intensive applications

- Chassis made of high-grade 8 mm steel.
- Torsion-resistant support arms with drawbar kinematics. Above all, no sagging on thresholds with heavy loads.



Fixed stand-on platform



Jungheinrich CanCode and CanDis (optional)

Long operating times

Battery capacities up to 375 Ah ensure long operating times.

- Short version: 2 PzS 230 Ah
- Long version: 3 PzS 345 (375) Ah

Optimum cornering ability

Sprung, hydraulically cushioned support wheels – connected via the coupling rocker "ProTracLink" – distribute the bearing force evenly dependent on the travel situation – to all wheels on straight travel, concentrated on the outer support wheel on corners.

Informed at any time

Extensive control instruments provide the operator with the good feeling of having everything under control at any time:

- Information display "CanDis" (optional) with added operating hour display and service code memory.
- Activation of truck via PIN through "CanCode" (optional).
- Other adjustment opportunities for travel parameters (optional).

Reduced maintenance

Service-friendly components ensure a long-term reduction in operating costs:

- Easy access to all aggregates through one-piece front cover with only two screws to be unscrewed.
- Low support wheel wear on sloped approach to ramp by way of level adjustment: being mechanically connected, both support wheels remain constantly at one level. The otherwise freely suspended support wheel does not touch anywhere and does not sustain any damage.
- A new type of form closure rims – exclusive to Jungheinrich – ensure a long lifespan of load wheels, even in the hardest applications.

Additional equipment

- Electric tiller steering.
- Vertical load guards.
- Drive section for sideways battery removal.
- Cold store version.

Jungheinrich Hellas EPE

10, Filippoupoleos str.
Thesi Loutro
136 71 Acharnes
Greece
Tel. 0030 210 2447800
Fax 0030 210 2447799

info@jungheinrich.gr
www.jungheinrich.gr

Jungheinrich AG
ISO 9001, ISO 14001
Certification of Quality and
Environment Management.



Jungheinrich trucks
conform to the European
Safety Requirements.



JUNGHEINRICH
Η επιλογή που αξίζει